

## Planning for a new Fire/Emergency Medical Services (EMS) Station:

**Facility:** Fire/EMS services reside in 2 facilities in Amherst – North Amherst and Central Stations. Built in 1929 as a fire station, the Central Fire Station is woefully inadequate for the operational needs of today’s modern fire and EMS service and Amherst’s greatly increased population.

**Services:** The Department provides services in fire suppression, emergency medical services, rescue services, fire prevention, safety education, and hazardous material incident response and disaster operations.



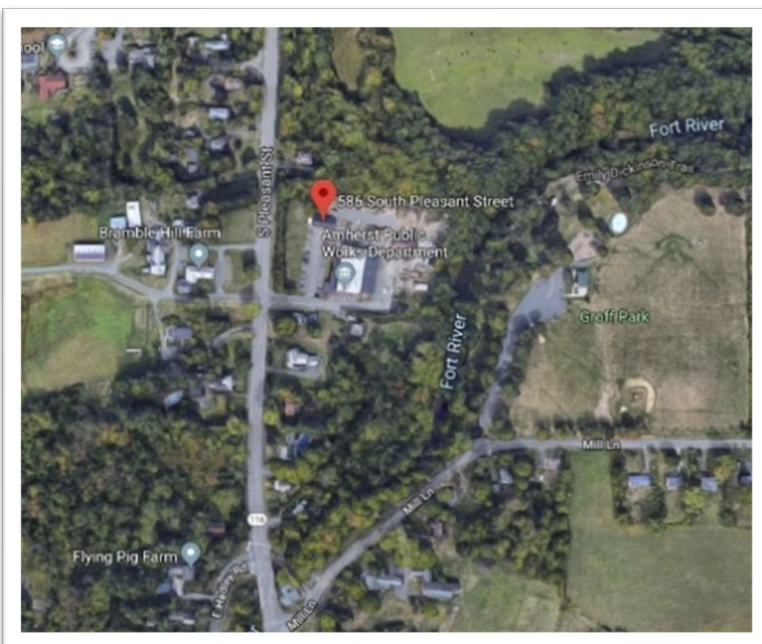
### Why is a new Fire/EMS facility needed?

The facility is totally inadequate and not a safe place to work. The space is too small for the fire and EMS apparatus and sufficient work and storage space. *The Department cannot acquire the types of fire apparatus necessary because of the space restrictions.* The electrical and plumbing systems are outdated. *The living and bathroom areas do not meet national standards or codes. There is no decontamination area,*

*no barriers between living spaces and areas susceptible to contamination. Air quality is an issue as Firefighters are constantly exposed to products of combustion and other contaminants.* Studies conducted in 1966, 1983, and 2006 all pointed out that emergency responses to parts of South and East Amherst are dangerously delayed due to their distance from the Central Fire Station. All three studies recommended replacing the station with a new one located somewhat south of the downtown. The full 2006 report can be found at [www.amherstma.gov/DocumentCenter/Home/View/33791](http://www.amherstma.gov/DocumentCenter/Home/View/33791). In fall 2016, the Special Town Meeting approved \$75,000 to do a feasibility study to build a new fire/EMS station south of the downtown, replacing the fire station at 68 North Pleasant St. The feasibility study by the firm Kaestle Boos, working with Mitchell Associates Architects, which specializes in fire and EMS station design, was completed in 2018.

### What did the Fire/EMS Feasibility Study include?

The study included a report and conceptual design and floor plans. This report, based on interviews with Amherst Fire Department staff and a review of current state and national standards for fire stations, is available at [www.amherstma.gov/DocumentCenter/View/42046](http://www.amherstma.gov/DocumentCenter/View/42046). A staff study is also available at [www.amherstma.gov/DocumentCenter/View/42045](http://www.amherstma.gov/DocumentCenter/View/42045). The best site for the fire/EMS station is 586 South Pleasant St., the site of the 102-year-old dilapidated building housing the Amherst DPW headquarters.



### What are the next steps towards a new Fire/EMS facility?

Once a site is finalized for the Fire/EMS station, the Town will hire a consultant to prepare the schematic design for a new facility. This phase will include site-specific analysis involving existing conditions, environmental and geotechnical investigations, and a Traffic Impact Assessment. The final report will include detailed drawings showing all interior spaces, exterior spaces, operational adjacencies and a detailed construction cost estimate.