



Catalog Number LHLWP-2-N-8-T3-H-TWO BRICK TYPE 3 2100MA LED WALL PACK	
Project ASPEN HEIGHTS - AMHERST	Type E

## FEATURES & SPECIFICATIONS

**APPLICATION** — The high performance luminaire is designed for cutoff applications where long life, low maintenance, and consistent color rendering are required. Areas with limited accessibility due to fixture location or where heavy pedestrian traffic makes maintenance difficult are ideal applications such as building facade lighting or wall mounted security lighting. The traditional design style of the luminaire allows it to be seamlessly integrated into existing systems when necessary.

**CONSTRUCTION** — The heavy duty housing is constructed of die cast aluminum. The optical assemblies are sealed in place using a silicone gasket for weather tight protection. Modular LED bricks wired in parallel for ease of maintenance. ETL listed for wet locations (IP64). Additional IP66 rating available upon request.

**FINISH** — A Super Durable Polyester powder coat finish is electrostatically applied in our state of the art paint facility. Standard colors available: Black, Bronze, US Green, White. Custom colors available upon request.

**OPTICAL SYSTEM** — Made with a state of the art UV stabilized acrylic high performance refractive optical assemblies that use high transmissivity materials to achieve precise photometric distributions. Available in a Type II, III or IV beam configuration.

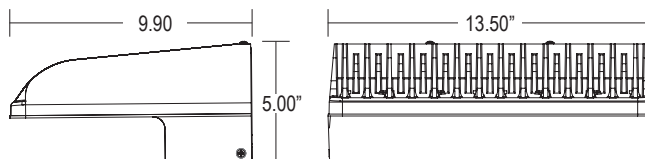
**ELECTRICAL SYSTEM** — Available in a high output 16 LED system in 5000K Cool White (+/- 500K) or 4100K Neutral White color temperatures propagated with Philips Lumileds LUXEON® M LED's. Available with 90-300V 50/60 Hz Class II power supply. LED's rated for over 50,000 hours at 25°C ambient temperature. 0-10V dimming standard. Built-in surge protection up to 10 kV. Built-in Active PFC Function >95%/Full load. LED Power Supply conforms to UL1310 Class 2 and UL8750 standards and is IP67 rated for wet locations.

**MOUNTING** — Quick sheet metal mounting bracket connects to a standard J-Box. The bracket has a unique hanging feature to allow easy wire connections. After connections are made, the fixture swings up and is secured with with two retaining screws at the top of the fixture. An additional back box is available for applications requiring side conduit entry (See Accessories).

**LISTINGS** — LED Power Supply listed for wet locations (IP67). LED bricks ETL listed for wet locations (IP64). Meets US and Canadian safety standards. -40°C to 50°C ambient operation.



## Large Heat Sink LED Wall Pack LHLWP SERIES



Series	Housing Height	Length & Width
<b>LHLWP</b>	5.00"	9.90" x 13.50"

DesignLights Consortium® Qualified. Please go to [www.designlights.org](http://www.designlights.org) for the current Qualified Products List. Further details about qualified models may be found under Family Models.

## ORDERING INFORMATION

Choose the bold face options for the appropriate luminaire configuration for your application and enter on the line above each fixture attribute. Accessories may be factory installed, depending on the particular accessory chosen, but still be ordered as a separate line item.

Example: **LHLWP1C8T3G1-BZ**

### LHLWP

Series	# of Bricks	Color Temp	# LED's per Brick	Optics	Drive Current	Voltage	Finish
<b>LHLWP</b>	<b>2</b> 2 Brick	<b>C</b> Cool White (5000K) <b>N</b> Neutral White (4100K)	<b>8</b> 8 LED	<b>T2</b> Type II <b>T3</b> Type III <b>T4</b> Type IV	<b>F</b> 1400mA Driver <b>H</b> 2100mA Driver	<b>1</b> Multi-Volt <sup>1</sup>	<b>BK</b> Black <b>BZ</b> Bronze <b>GR</b> US Green <b>WH</b> White <b>SP</b> Special <sup>2</sup>

### Accessories (Order as separate line items)

<b>PLHSENCA</b>	Back Box Enclosure with Conduit Entries
<b>LHLWPBBU</b>	2000 Lumen/90 Minute Battery Back-Up with Fixture Back Box
<b>P1000PC<sup>3</sup></b>	Button Type Photocell
<b>IP66<sup>4</sup></b>	Additional IP66 Fixture Rating

#### NOTES

- Multi-Volt is an auto ranging power supply from 90V to 300V input.
- Custom RAL color matching is available. Contact your Techlight sale representative for additional information.
- P1000PC operates at 120V only. For photocells to operate at additional voltages, please consult your local Techlight representative. Back Box Enclosure required for Button Photocell mounting.
- Additional IP66 rating may not be changed once production has begun on the fixtures.

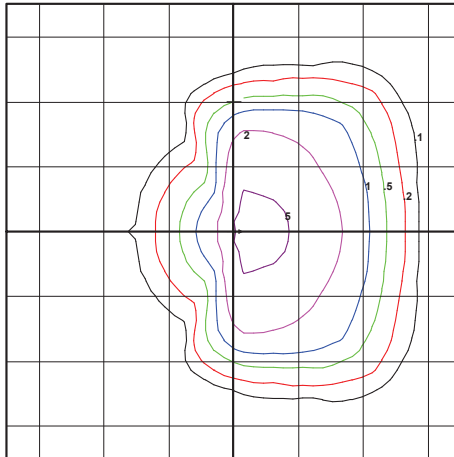
# LHLWP Large Heat Sink LED Wall Pack

## PHOTOMETRICS

### IES INDOOR REPORT PHOTOMETRIC FILE NAME: LHLWP2C8T3F1

Type III Optical Assembly  
2 Brick, 1400mA, Cool  
White

144W LHLWP Wall Pack  
Color Temperature: 5,000 K



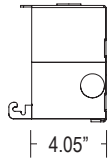
WWW.TECHLIGHTUSA.COM

Horizontal Footcandles  
Scale: 1 Inch = 20 Ft  
Light Loss Factor = 0.90  
Lumens Per Lamp = NA, (absolute photometry)  
Luminaire Lumens = 12246  
Mounting Height = 15.00 Ft  
Maximum Calculated Value = 7.91 Fc  
Arrangement: Single  
Arm Length = .5 Ft

## ADDITIONAL FIXTURE ACCESSORIES

### PLHSENCA

Back Box Enclosure with Top and Side Conduit Entries



### P1000PC

Button-Type Photocell



# LHLWP Large Heat Sink LED Wall Pack

## LUMINAIRE CHARACTERISTICS

### Cool White (5000K) 1400 mA Drive Current

# of LED Bricks	# of LEDs per Brick	Color Temp	Delivered Lumens			System Wattage	B50 L70 @ 25°C	Amperage Draw			
			TYPE II	TYPE III	TYPE IV			120V	208V	240V	277V
2 BRICK	8	CW	13165	14190	13866	144W	> 50K	1.20 A	.70 A	.60 A	.52 A

### Neutral White (4100K) 1400 mA Drive Current

# of LED Bricks	# of LEDs per Brick	Color Temp	Delivered Lumens			System Wattage	B50 L70 @ 25°C	Amperage Draw			
			TYPE II	TYPE III	TYPE IV			120V	208V	240V	277V
2 BRICK	8	NW	12695	13764	13366	144W	> 50K	1.20 A	.70 A	.60 A	.52 A

### Cool White (5000K) 2100 mA Drive Current

# of LED Bricks	# of LEDs per Brick	Color Temp	Delivered Lumens			System Wattage	B50 L70 @ 25°C	Amperage Draw			
			TYPE II	TYPE III	TYPE IV			120V	208V	240V	277V
2 BRICK	8	CW	17246	20290	18164	213W	> 50K	1.76 A	1.02 A	.88 A	.77 A

### Neutral White (4100K) 2100 mA Drive Current

# of LED Bricks	# of LEDs per Brick	Color Temp	Delivered Lumens			System Wattage	B50 L70 @ 25°C	Amperage Draw			
			TYPE II	TYPE III	TYPE IV			120V	208V	240V	277V
2 BRICK	8	NW	16630	19682	17512	213W	> 50K	1.76 A	1.02 A	.88 A	.77 A

## BUG RATINGS (BACKLIGHT, UPLIGHT AND GLARE)

Optic Type	BUG Ratings		
	B (Backlight)	U (Uplight)	G (Glare)
Type III (T3)	2	0	3

**WARNING:** Maintenance performed including the replacement of LED bricks while power is still supplied to the luminaire may result in system failures and will void the warranty.



Techlight, Inc.  
 2707 Satsuma Drive  
 Dallas, TX, 75229  
 Phone: 214-350-0591, 800-225-0727, Fax: 214-350-9137  
 www.techlight.com