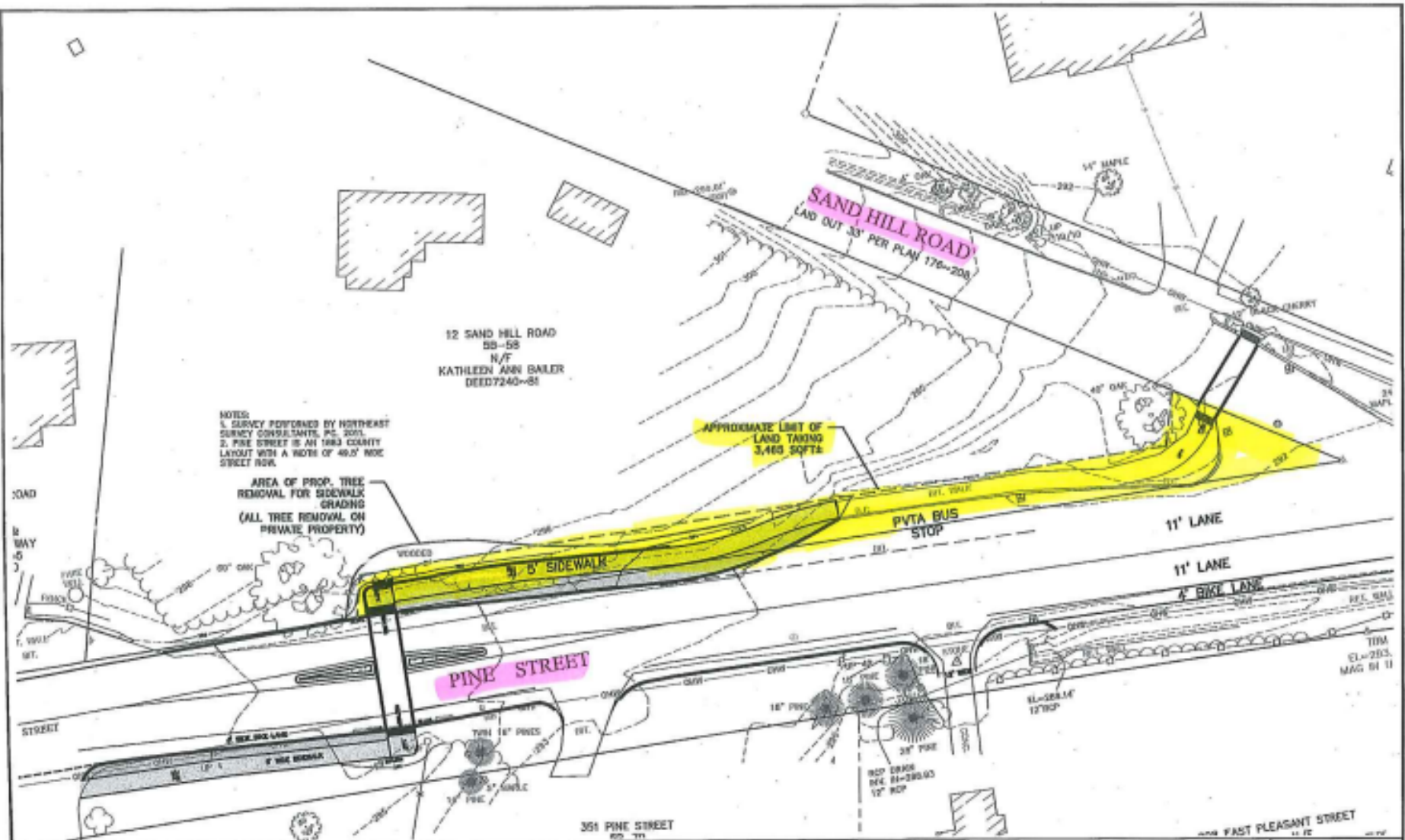


# Article 22 Pine Street Sidewalk



NOTES:  
1. SURVEY PERFORMED BY NORTHEAST SURVEY CONSULTANTS, INC. 2011.  
2. PINE STREET IS AN 1983 COUNTY LAYOUT WITH A WIDTH OF 48.0' SIDE STREET ROW.

AREA OF PROP. TREE REMOVAL FOR SIDEWALK GRADING (ALL TREE REMOVAL ON PRIVATE PROPERTY)

APPROXIMATE LIMIT OF LAND TAKING 3,460 SQFT

**PINE STREET ROADWAY AND SIDEWALK PROJECT**  
AMHERST, MASSACHUSETTS 01002

**PRELIMINARY TREE REMOVAL AND SIDEWALK TAKING PLAN**  
12 SAND HILL ROAD

10/19/2015  
NTS