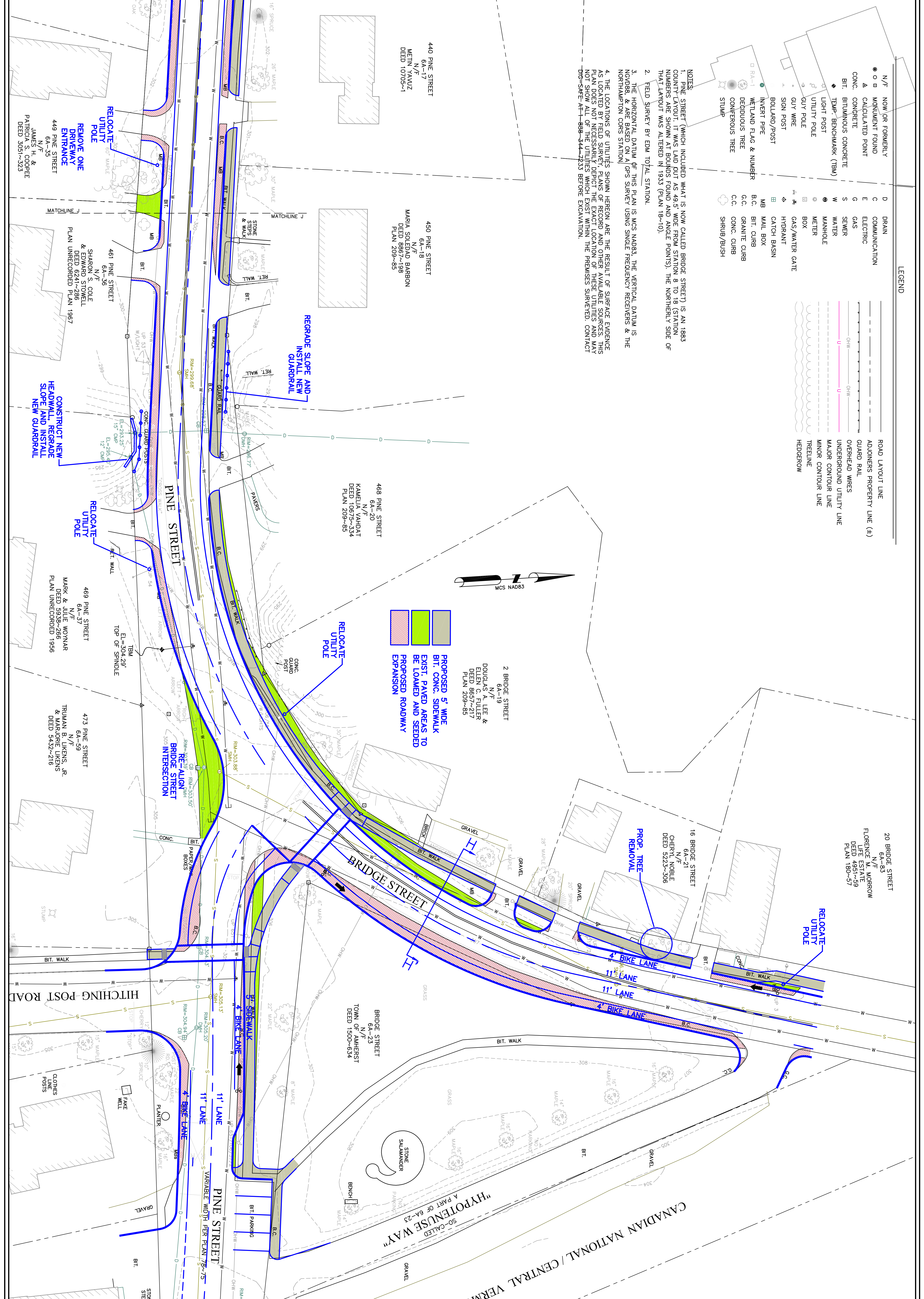


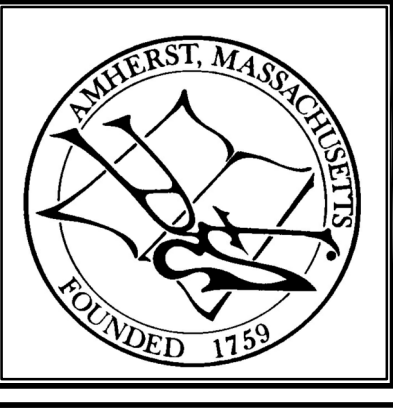
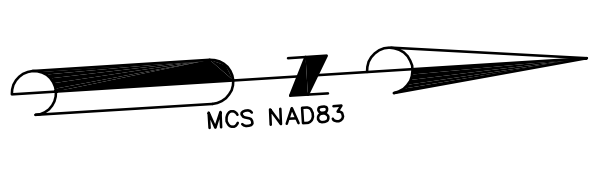
LEGEND

N/F	MONUMENT FOUND	D	DRAIN
●	●	C	COMMUNICATION
▲	▲	E	ELECTRIC
CONC.	CONCRETE	G	GAS
BIT.	BITUMINOUS CONCRETE	S	SEWER
◆	TEMP. BENCHMARK (TBM)	W	WATER
◇	UTILITY POST	MANHOLE	MANHOLE
○	UTILITY POLE	METER	METER
○	GUY WIRE	BOX	BOX
○	GUY WIRE	○	GAS/WATER GATE
○	SIGN POST	○	HYDRANT
○	BOLLARD/POST	○	CATCH BASIN
○	WETLAND FLAG & NUMBER	MB	MAIL BOX
○	DECIDUOUS TREE	B.C.	BIT. CURB
○	CONIFEROUS TREE	G.C.	GRANITE CURB
○	STUMP	C.C.	CONC. CURB
		○	SHRUB/BUSH

- NOTES:
1. PINE STREET (WHICH INCLUDED WHAT IS NOW CALLED BRIDGE STREET) IS AN 1883 COUNTY LAYOUT. IT WAS LAID OUT AS 49.5' WIDE FROM STATION 8 TO 18 (STATION NUMBERS ARE SHOWN AT BOUNDS FOUND AND ANGLE POINTS). THE NORTHERLY SIDE OF THAT LAYOUT WAS ALTERED IN 1933 (PLAN 18-10).
  2. FIELD SURVEY BY EDM TOTAL STATION.
  3. THE HORIZONTAL DATUM OF THIS PLAN IS MCS NAD83, THE VERTICAL DATUM IS NAD83 & ARE BASED ON A GPS SURVEY USING SINGLE FREQUENCY RECEIVERS & THE NORTHAMPTON CORS STATION.
  4. THE LOCATIONS OF UTILITIES SHOWN HEREON ARE THE RESULT OF SURFACE EVIDENCE AS LOCATED BY FIELD SURVEY. PLANS OF RECORD AND OTHER AVAILABLE SOURCES THIS PLAN DOES NOT NECESSARILY DEPICT THE EXACT LOCATION OF THESE UTILITIES AND MAY NOT SHOW ALL OF THE UTILITIES WHICH EXIST WITHIN THE PREMISES SURVEYED. CONTACT DGS-S&E AT 1-888-344-2233 BEFORE EXCAVATION.



PROPOSED 5' WIDE  
BIT. CONC. SIDEWALK  
EXIST. PAVED AREAS TO  
BE LOAMED AND SEEDED  
PROPOSED ROADWAY  
EXPANSION



PINE STREET  
N. PLEASANT (RT.63)  
TO HENRY STREET  
AMHERST, MA

SURVEYOR:	DFS	ENGINEER:	-
DRAFTING:	JED/CGG	DESIGN:	-
FIELD WORK:	JED/CGG	HORZ. SCALE:	1" = 20'
PROJECT NUMBER:	TP11-07	VERT. SCALE:	-
DRAWING NAME:	PDWORK	DATE:	06-01-2012

CONCEPTUAL  
STREET LAYOUT  
OPTION 1

SHEET NO.  
**8** OF **10**