

188 PINE STREET
 SB-11-164
 N/F
 KATHERINE M. MAGUA
 & YUSEF AWAD
 DEED 9644-57
 PLAN 189-103

208 PINE STREET
 SB-11-164/54-164
 N/F
 LAURIE B. HANLEY CONDO'S
 DEED 9133-209
 PLAN 214-25

216 PINE STREET
 SB-51
 N/F
 ALEXANDER ANTHONY
 & MARTHA T. GURSKI
 DEED 5543-190

226 PINE STREET
 SB-52
 N/F
 CAROLYN J. THOMAS
 DEED 8006-220

177 PINE STREET
 SB-166
 N/F
 RONALD D. LASHWAY, SR
 & CHRISTA LASHWAY
 DEED 8146-17
 PLAN 194-15

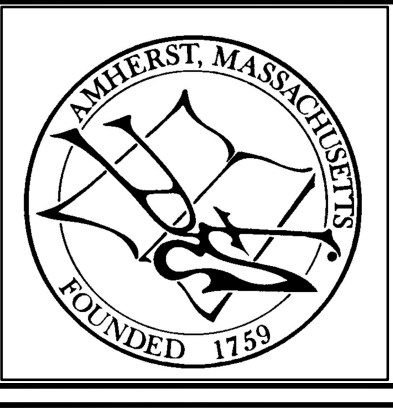
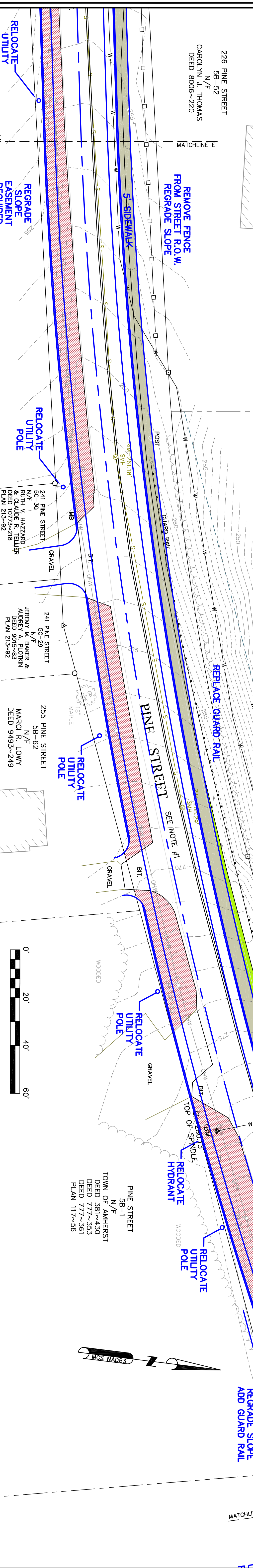
155/161 PINE STREET
 SB-1A THRU 2D-156
 N/F
 CONDO COMPLEX
 DEED 4358-172

NORTH PLEASANT STREET
 SC-21
 N/F
 NORTH AMHERST
 COMMUNITY FARM INC.
 DEED 8788-126

- LEGEND**
- | | | | | | |
|-----|---|--------------------------|------|---|----------------|
| N/F | ● | NOW OR FORMERLY | D | — | DRAIN |
| ● | ○ | MONUMENT FOUND | C | — | COMMUNICATION |
| ▲ | △ | CALCULATED POINT | E | — | ELECTRIC |
| □ | ■ | CONC. CONCRETE | G | — | GAS |
| ◆ | ◇ | BIT. BITUMINOUS CONCRETE | S | — | SEWER |
| ☆ | ★ | TEMP. BENCHMARK (TBM) | W | — | WATER |
| ⊙ | ⊛ | LIGHT POST | M | — | MANHOLE |
| ⊕ | ⊗ | UTILITY POLE | M | — | METER |
| ⊖ | ⊗ | GUY WIRE | ⊖ | — | BOX |
| ⊗ | ⊗ | SIGN POST | ⊖ | — | GAS/WATER GATE |
| ⊗ | ⊗ | BOLLARD/POST | ⊖ | — | HYDRANT |
| ⊗ | ⊗ | INVERT PIPE | ⊖ | — | CATCH BASIN |
| ⊗ | ⊗ | WETLAND FLAG & NUMBER | MB | — | MAIL BOX |
| ⊗ | ⊗ | DECIDUOUS TREE | B.C. | — | BIT. CURB |
| ⊗ | ⊗ | CONIFEROUS TREE | G.C. | — | GRANITE CURB |
| ⊗ | ⊗ | STUMP | C.C. | — | CONC. CURB |
| | ⊗ | | | — | SHRUB/BUSH |

- | | |
|---|-----------------------------|
| — | ROAD LAYOUT LINE |
| — | ADJOINERS PROPERTY LINE (F) |
| — | GUARD RAIL |
| — | OVERHEAD WIRES |
| — | UNDERGROUND UTILITY LINE |
| — | MAJOR CONTOUR LINE |
| — | MINOR CONTOUR LINE |
| — | TREELINE |
| — | HEDGEROW |

- NOTES:**
- PINE STREET (WHICH INCLUDED WHAT IS NOW CALLED BRIDGE STREET) IS AN 1883 COUNTY LAYOUT. IT WAS LAID OUT AS 49.5' WIDE FROM STATION 8 TO 18 (STATION NUMBERS ARE SHOWN AT BOUNDS FOUND AND ANGLE POINTS). THE NORTHERLY SIDE OF THAT LAYOUT WAS ALTERED IN 1933 (PLAN 18-10).
 - FIELD SURVEY BY EDM TOTAL STATION.
 - THE HORIZONTAL DATUM OF THIS PLAN IS MGS NAD83. THE VERTICAL DATUM IS NGVD88, & ARE BASED ON A GPS SURVEY USING SINGLE FREQUENCY RECEIVERS & THE NORTHAMPTON CORNS STATION.
 - THE LOCATIONS OF UTILITIES SHOWN HEREON ARE THE RESULT OF SURFACE EVIDENCE AS LOCATED BY FIELD SURVEY. PLANS OF RECORD AND OTHER AVAILABLE SOURCES. THIS PLAN DOES NOT NECESSARILY DEPICT THE EXACT LOCATION OF THESE UTILITIES AND MAY NOT SHOW ALL OF THE UTILITIES WHICH EXIST WITHIN THE PREMISES SURVEYED. CONTACT DIG-SAFE AT 1-888-344-7233 BEFORE EXCAVATION.



**PINE STREET
 N. PLEASANT (RT.63)
 TO HENRY STREET
 AMHERST, MA**

SURVEYOR:	DFS	ENGINEER:	—
DRAFTING:	JED/CGG	DESIGN:	—
FIELD WORK:	JED/CGG	HORZ. SCALE:	1" = 20'
PROJECT NUMBER:	TP11-07	VERT. SCALE:	—
DRAWING NAME:	PDWORK	DATE:	06-01-2012

**CONCEPTUAL
 STREET LAYOUT
 OPTION 1**

SHEET NO.
3 OF 10